

# ROLLER CONVEYOR STYLE AGRICULTURE GRADE CHAIN

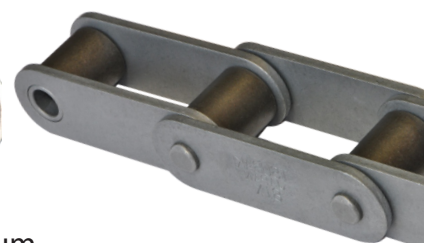


## 81X STYLE - 2.609 PITCH

- Available in 81XTSU, 81XHDTSU, 81XHHTSU Carbon Steel Chain.
- Also available in 81XSSTSU Stainless Steel.
- 81XHDTSU and 81XHHTSU are both quad riveted pins for heavy side loading strength.
- All Tsubaki 81X chain have shot peened side plates for additional fatigue strength.

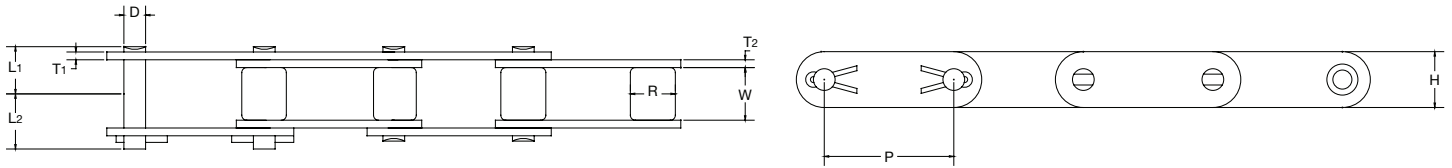
Tier	Key Features
81XTSU	A standard version that meets the general need of non-timed applications.
81X Premium	Building upon the strength of the 81X design, Premium offers better performance on multi-strand timed conveyors where relative length tolerance and rate of stretch is critical. <ul style="list-style-type: none"> <li>• Features Performax Bushing with patented lube grooves</li> <li>• Improved material &amp; heat treatment</li> <li>• Precision and consistency of fabrication &amp; assembly</li> </ul>
81X Lambda <sup>1</sup>	Oil impregnated sintered metal bushing for lube-free operation. <ul style="list-style-type: none"> <li>• 7-14 times longer life than unlubricated chain</li> <li>• Same precision of material, heat treatment, fabrication and assembly as 81X Premium.</li> </ul>

<sup>1</sup> Note that 81X Lambda chain has a slighter wider profile than Premium or TSU.



Patented lube groove bushings standard on 81XPremium

# 81X Chain



All 81X series chain can run on the same sprocket.

All dimensions in inches unless otherwise stated.

Chain Number	Pitch P	Roller Diameter R	Width Between Inner Link Plates W	Link Plate			Pin				Average Tensile Strength (lbs.)	Approx. Weight (lbs./ft.)
				Thickness T1	Thickness T2	Height H	Diameter D	Length L1 + L2	Length L1	Length L2		
81XTSU	2.609	0.906	1.060	0.157	0.157	1.125	0.437	2.063	0.951	1.112	24,000	2.42
81XHDTSU	2.609	0.906	1.060	0.220	0.315	1.260	0.437	2.536	1.181	1.355	42,000	4.12
81XHHTSU	2.609	0.906	1.062	0.299	0.299	1.250	0.437	2.763	1.268	1.495	41,000	4.40
81X PREMIUM	2.609	0.906	1.060	0.157	0.157	1.125	0.437	2.063	0.951	1.112	24,000	2.42
81X PREMIUM NEP	2.609	0.906	1.060	0.157	0.157	1.125	0.437	2.063	0.951	1.112	24,000	2.42
81XHD PREMIUM	2.609	0.906	1.060	0.220	0.315	1.260	0.437	2.536	1.181	1.355	42,000	4.12
81X LAMBDA	2.609	0.906	1.060	0.157	0.189	1.125	0.437	2.146	0.998	1.148	24,000	2.42
81XSS	2.609	0.906	1.060	0.157	0.157	1.125	0.437	2.063	0.951	1.112	11,000	2.42



81XTSU



81XHDTSU



81XHHTSU

